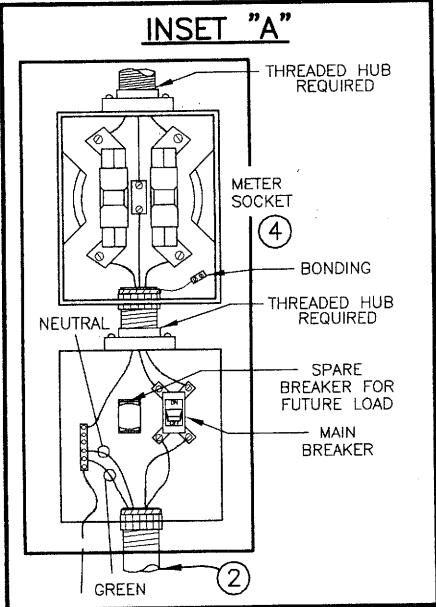
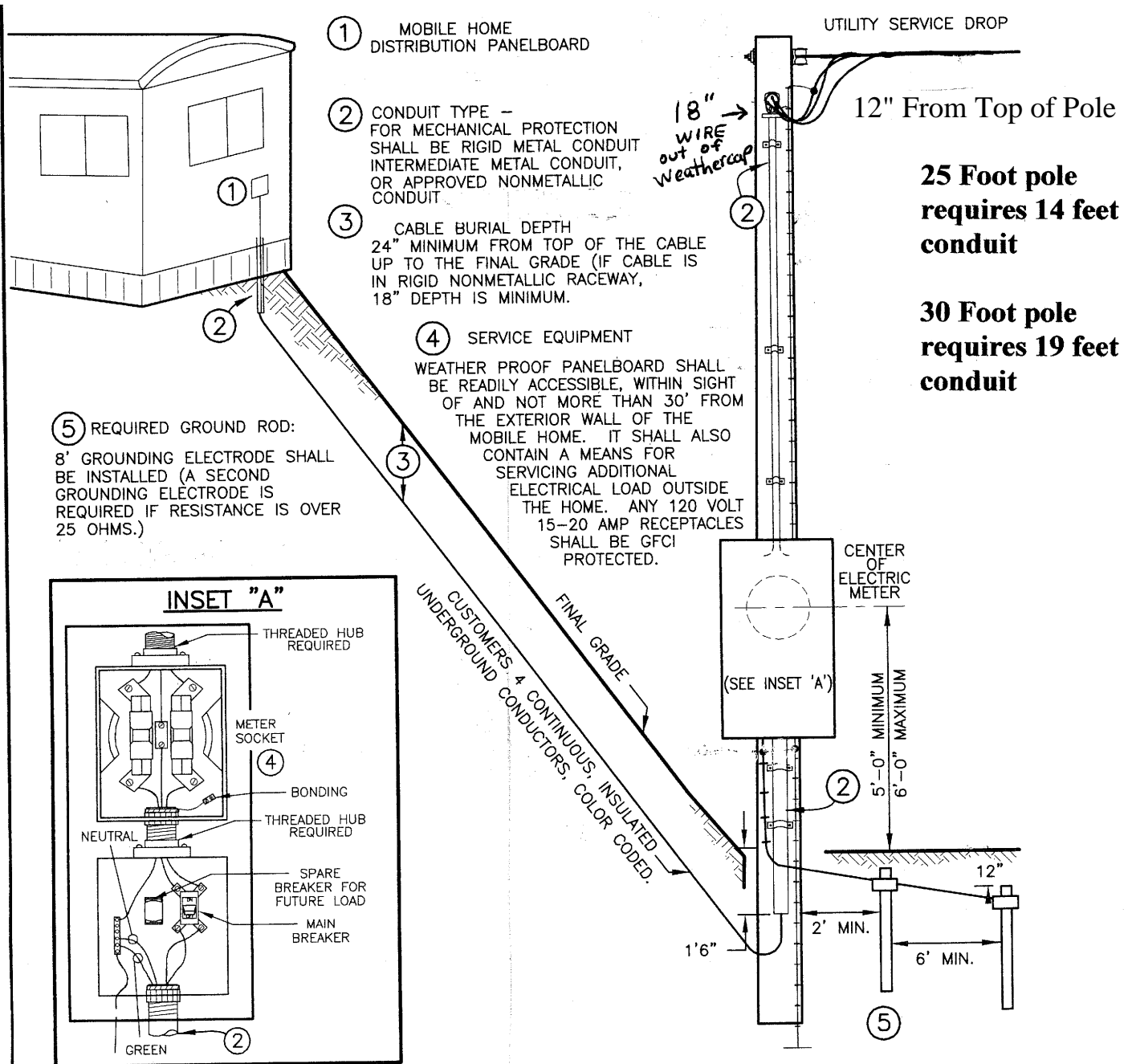




Typical Mobile Home Service Entrance with Big Sandy RECC installed service pole.



AMPS	SERVICE ENTRANCE WEATHERHEAD TO DISCONNECT CONDUCTOR THW OR EQUIV.				FEEDER CIRCUIT SERVICE POLE TO MOBILE HOME CONDUCTOR RHW,UF,URD,OR EQUIV.				INSULATED COPPER GROUNDING WIRE (GREEN)
	COPPER	CONDUIT	ALUM	CONDUIT	COPPER	CONDUIT	ALUM	CONDUIT	
100	#4	1 1/4"	#2	1 1/4"	#4	1 1/4"	#2	1 1/4"	#8
200	#2/0	1 1/2"	#4/0	2"	#2/0	2"	#4/0	2"	#6

State Electrical Inspector must inspect and provide compliance form.